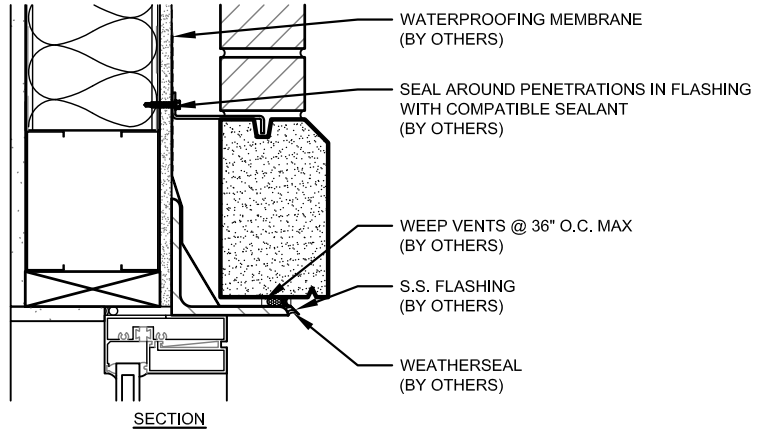
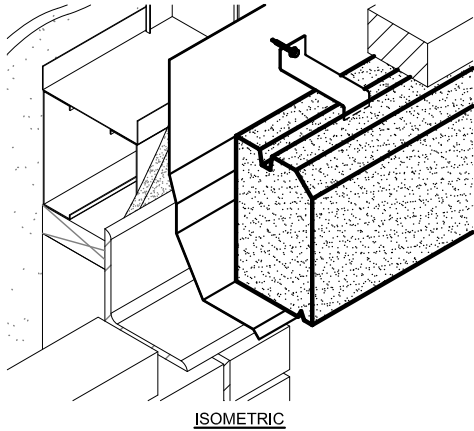


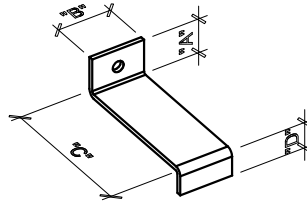
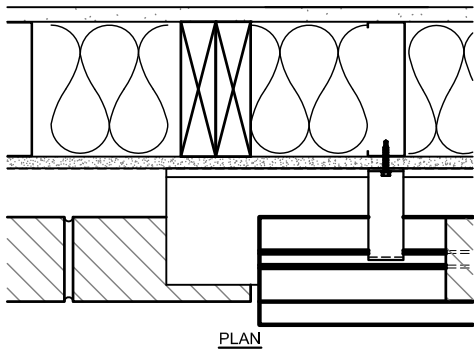
Anchoring and Flashing Details

These are typical connections recommended by the Cast Stone Institute for similar applications. Consult your engineer for size and connection requirement before ordering anchors.

DETAIL 1-"Z" STRAP ANCHOR @ HEADER

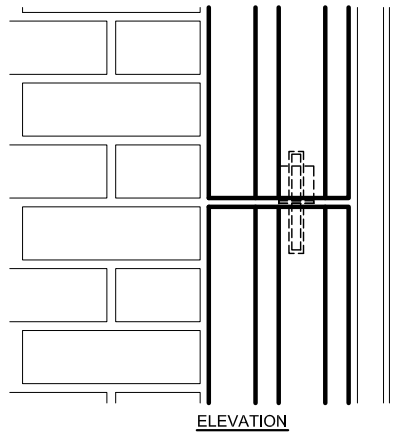
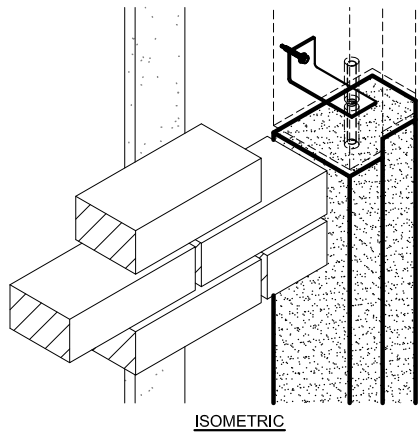


"Z" STRAP ISOMETRIC

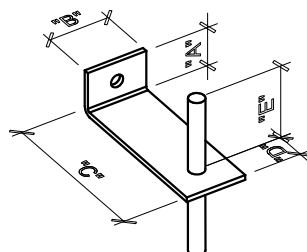
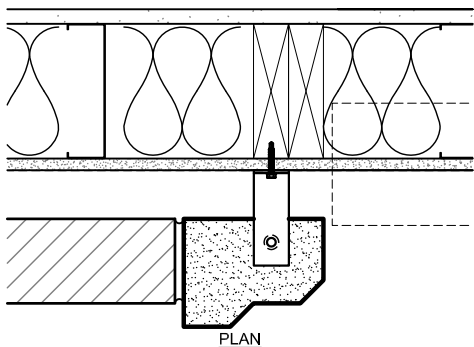


Typical "A" dimensions are 1"-2".
 Typical "B" dimensions are 1"-2".
 Typical "C" dimensions are from center of stone to the face of sheathing/outside face of wall structure.
 Typical "D" dimensions are $\frac{3}{4}$ "-1".
 Typical thru hole diameter is $\frac{1}{16}$ " larger than the fastener.
 For example, using a $\frac{1}{4}$ " self tapping metal screw the diameter would be $\frac{5}{16}$ ".

DETAIL 2-"L" STRAP W/ WELDED DOWEL PINS @ JAMB



"L" STRAP W/ WELDED DOWEL PINS ISOMETRIC

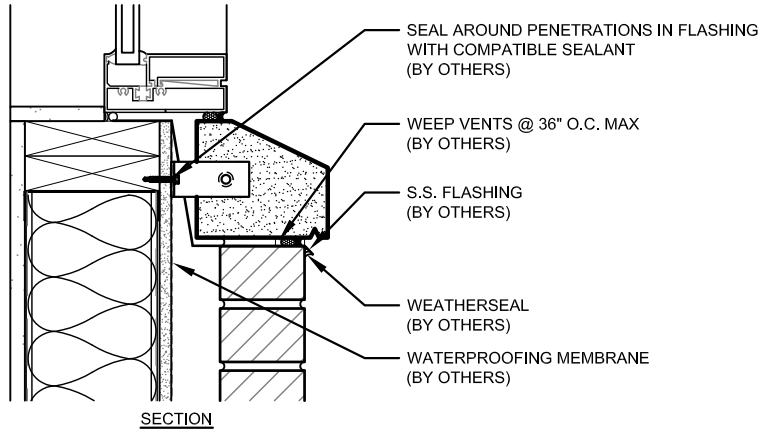
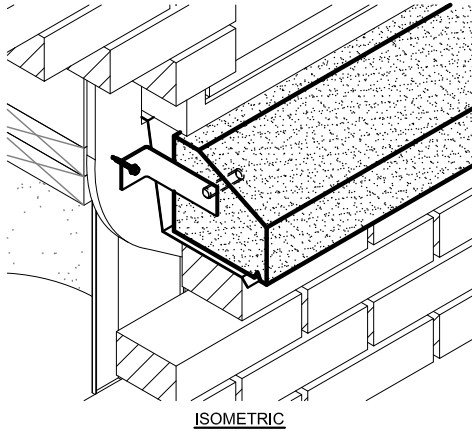


Typical "A" dimensions are 1"-2".
 Typical "B" dimensions are 1"-2".
 Typical "C" dimensions are from center of stone to the face of sheathing/outside face of wall structure.
 Typical "D" dimensions are $\frac{3}{4}$ "-1".
 Typical thru hole diameter is $\frac{1}{16}$ " larger than the fastener.
 For example, using a $\frac{1}{4}$ " self tapping metal screw the diameter would be $\frac{5}{16}$ ". Typical dowel hole size is $\frac{1}{2}$ " larger than pin.

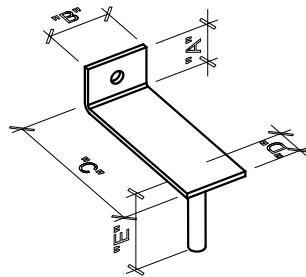
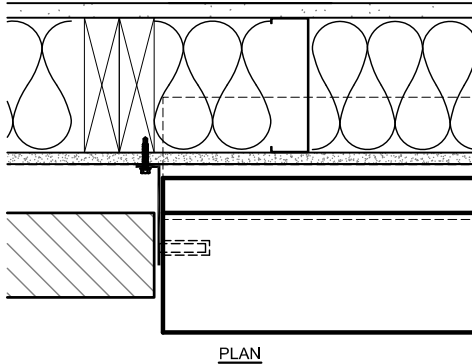
Anchoring and Flashing Details

These are typical connections recommended by the Cast Stone Institute for similar applications. Consult your engineer for size and connection requirement before ordering anchors.

DETAIL 3-"L" STRAP W/ WELDED DOWEL PIN @ SILL

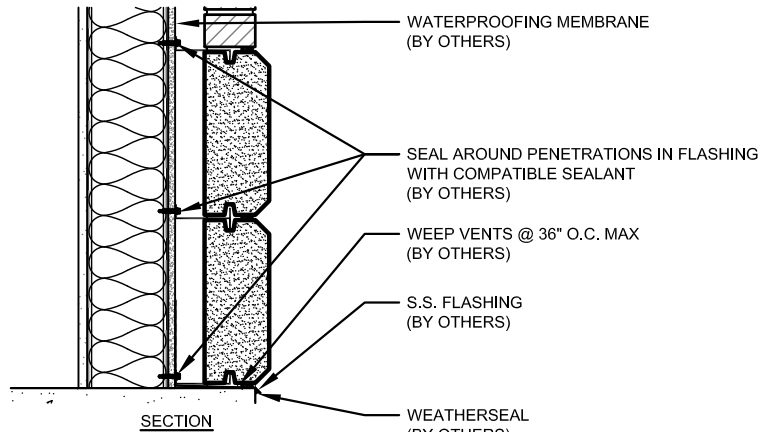
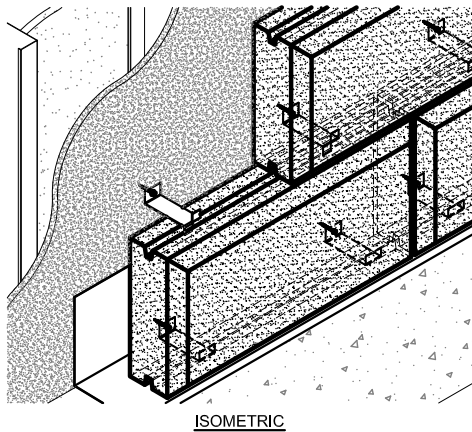


"L" STRAP W/ WELDED DOWEL PIN ISOMETRIC

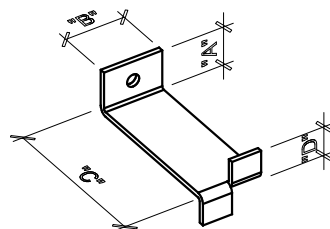
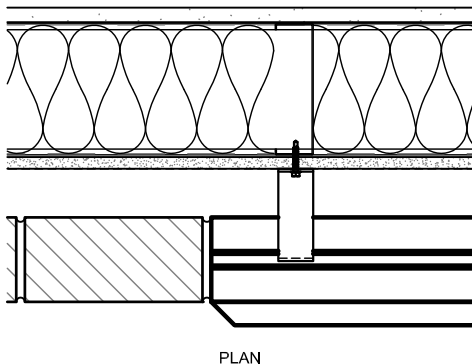


Typical "A" dimensions are 1"-2".
 Typical "B" dimensions are 1"-2".
 Typical "C" dimensions are from center of stone to the face of sheathing/outside face of wall structure.
 Typical "D" dimensions are $\frac{3}{4}$ "-1".
 Typical thru hole diameter is $\frac{1}{16}$ " larger than the fastener.
 For example, using a $\frac{1}{4}$ " self tapping metal screw the diameter would be $\frac{5}{16}$ ". Typical dowel hole size is $\frac{1}{2}$ " larger than pin.

DETAIL 4-"SPLIT TAIL" STRAP @ VENEER



"SPLIT TAIL" STRAP ISOMETRIC

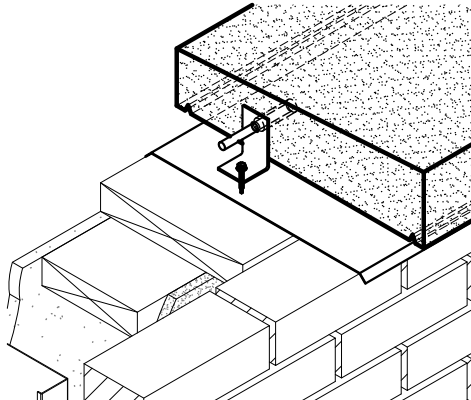


Typical "A" dimensions are 1"-2".
 Typical "B" dimensions are 1"-2".
 Typical "C" dimensions are from center of stone to the face of sheathing/outside face of wall structure.
 Typical "D" dimensions are $\frac{3}{4}$ "-1".
 Typical thru hole diameter is $\frac{1}{16}$ " larger than the fastener.
 For example, using a $\frac{1}{4}$ " self tapping metal screw the diameter would be $\frac{5}{16}$ ".

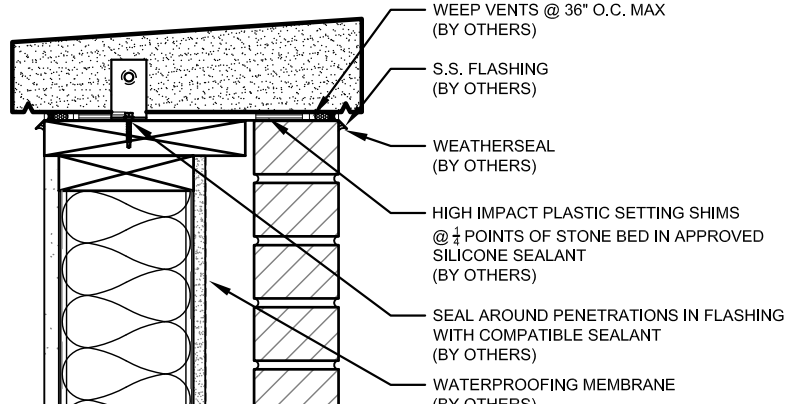
Anchoring and Flashing Details

These are typical connections recommended by the Cast Stone Institute for similar applications. Consult your engineer for size and connection requirement before ordering anchors.

DETAIL 5-"L" STRAP W/ WELDED DOWEL PINS @ COPING

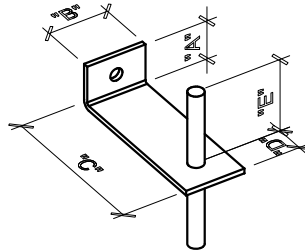


ISOMETRIC

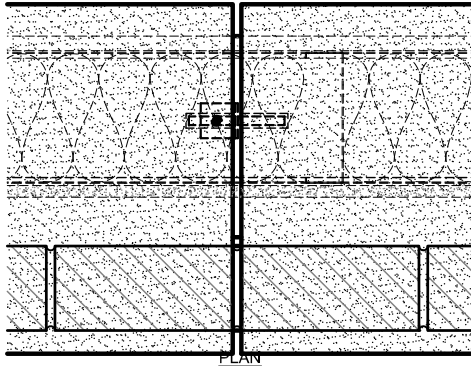


SECTION

"L" STRAP W/ WELDED DOWEL PINS
ISOMETRIC

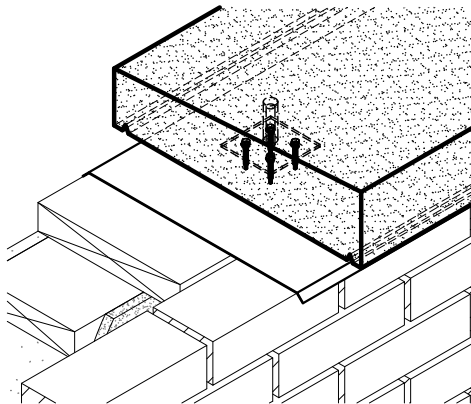


Typical "A" dimensions are 1"-2".
 Typical "B" dimensions are 1"-2".
 Typical "C" dimensions are from center of stone to the face of sheathing/outside face of wall structure.
 Typical "D" dimensions are 3/4"-1".
 Typical thru hole diameter is 1/16" larger than the fastener.
 For example, using a 1/4" self tapping metal screw the diameter would be 5/16". Typical dowel hole size is 1/2" larger than pin.

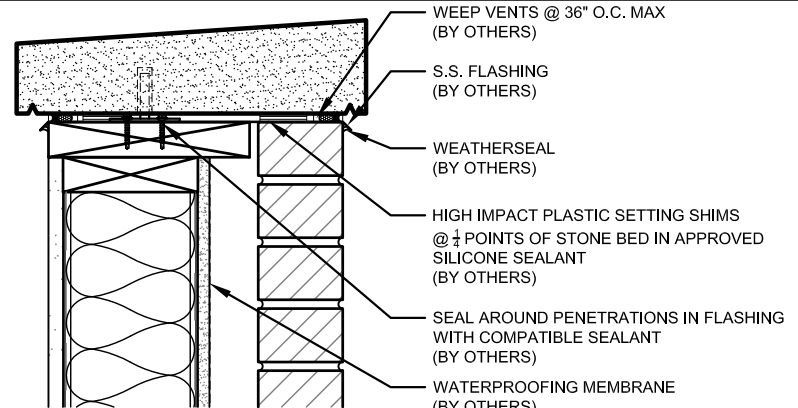


PLAN

DETAIL 6-WELDED DOWEL PIN AND PLATE @ COPING

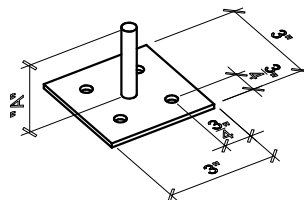


ISOMETRIC

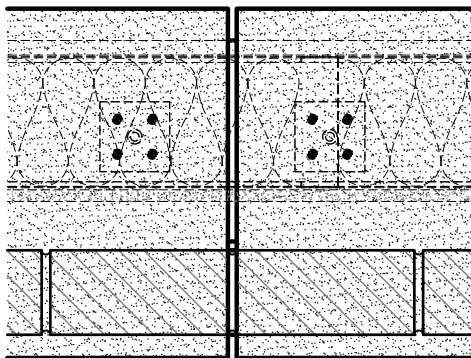


SECTION

WELDED DOWEL PIN AND PLATE
ISOMETRIC



Typical "A" dimensions are 2"-3", with the most common being 2"
 Typical diameter varies from 3/8"-1" depending on the size of the stone. Most commonly used are 1/2" diameter x 2" LG. Field drill 1" diameter x 2" hole and fill with epoxy. Typical dowel hole size is 1/2" larger than pin.

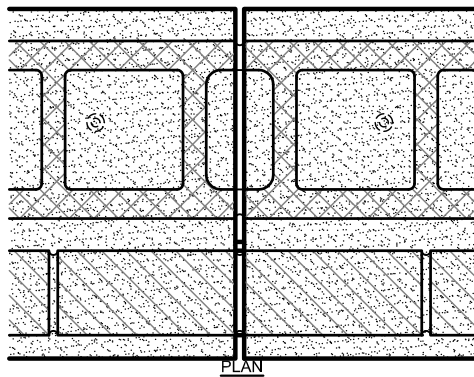
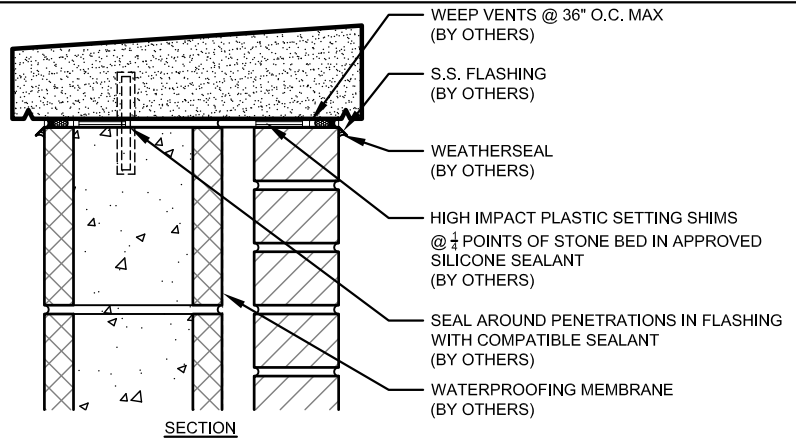
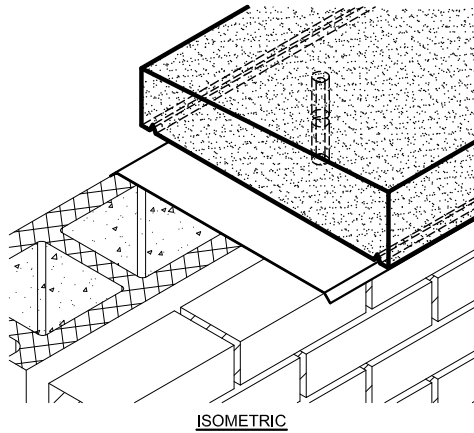


PLAN

Anchoring and Flashing Details

These are typical connections recommended by the Cast Stone Institute for similar applications. Consult your engineer for size and connection requirement before ordering anchors.

DETAIL 7-DOWEL PIN @ COPING

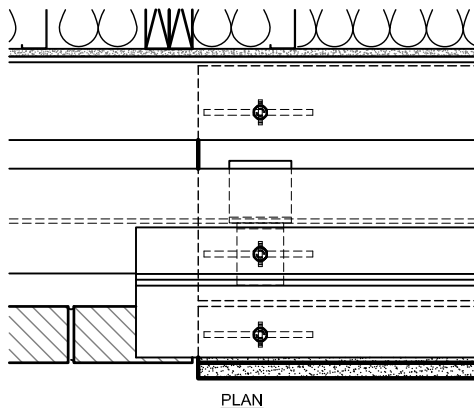
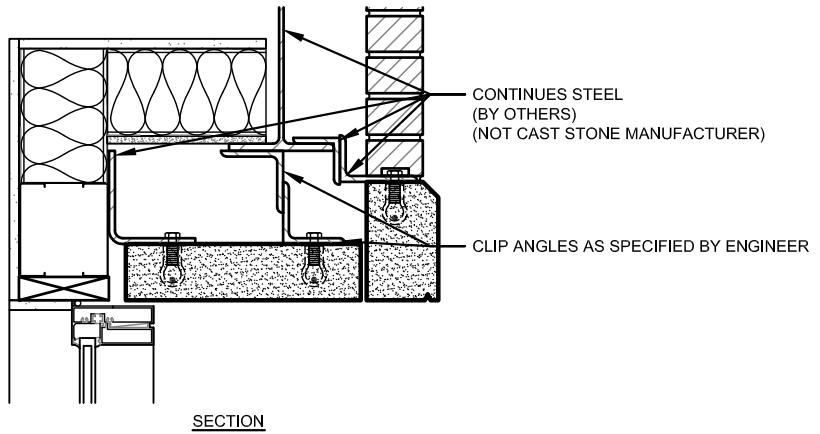
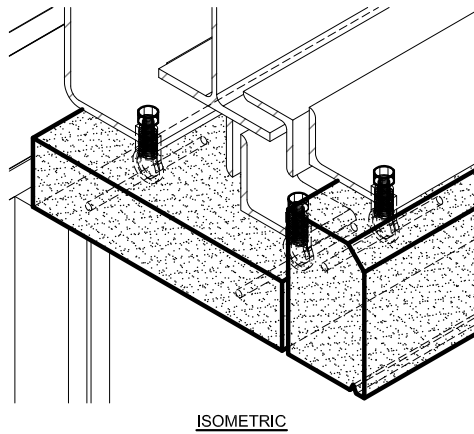


DOWEL PIN ISOMETRIC

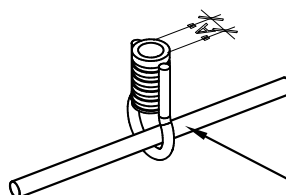


Typical "A" dimensions are 2"-6", with the most common being 4"
 Typical diameter varies from 3/8"-1" depending on the size of the stone. Most commonly used are 1/2" diameter x 4" LG. Field drill 1" diameter x 2" deep hole in to filled CMU and fill with non-shrink grout. Typical dowel hole size is 1/2" larger than pin.

DETAIL 8-FERRULE LOOP INSERT @ HEADER AND SOFFET



NC THREADED FERRULE LOOP INSERT ISOMETRIC



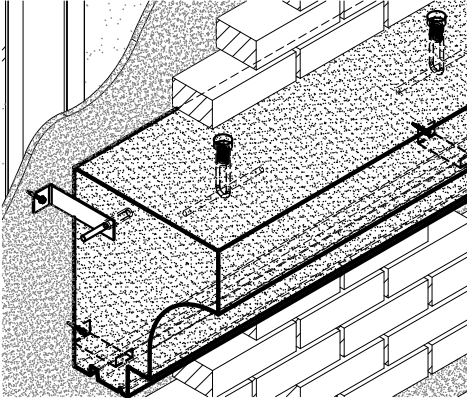
REBAR PER ENGINEER REQUIREMENTS

Typical "A" dimensions are 3/8"-1", with the most common being 1/2"

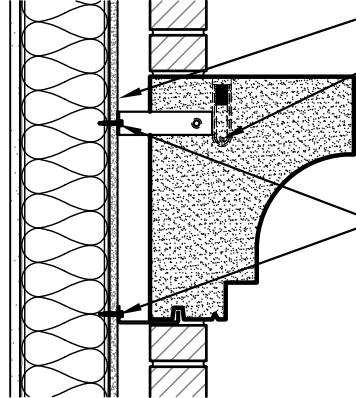
Anchoring and Flashing Details

These are typical connections recommended by the Cast Stone Institute for similar applications. Consult your engineer for size and connection requirement before ordering anchors.

DETAIL 9-COIL LOOP LIFTING INSERT @ CORNICE



ISOMETRIC



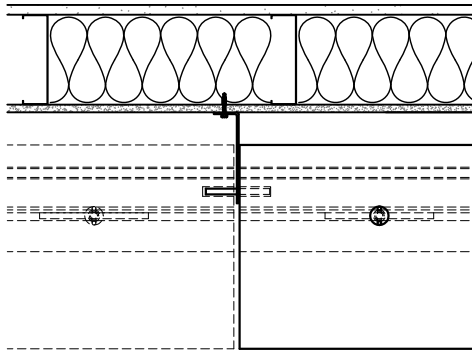
WATERPROOFING MEMBRANE
(BY OTHERS)
REBAR PER ENGINEER REQUIREMENTS

SEAL AROUND PENETRATIONS IN FLASHING
WITH COMPATIBLE SEALANT
(BY OTHERS)

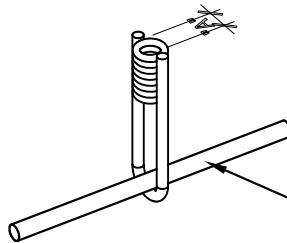
SECTION

COIL LOOP LIFTING INSERT
ISOMETRIC

Typical "A" dimensions are $\frac{3}{8}$ "-1", with the most common being $\frac{1}{2}$ ". After installation, the installer, must repair lifting insert void with patch material from the cast stone manufacturer.

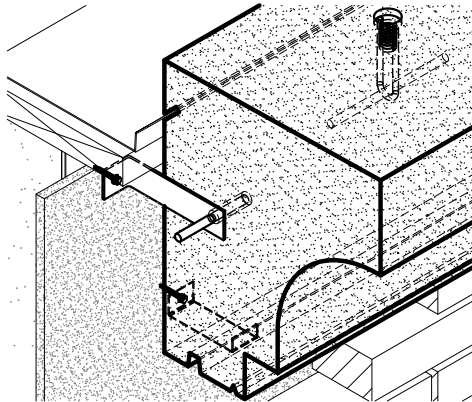


PLAN

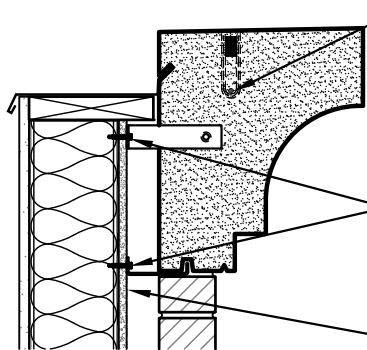


REBAR PER ENGINEER REQUIREMENTS

DETAIL 10-FIELD CUT REGLET



ISOMETRIC



REBAR PER ENGINEER REQUIREMENTS

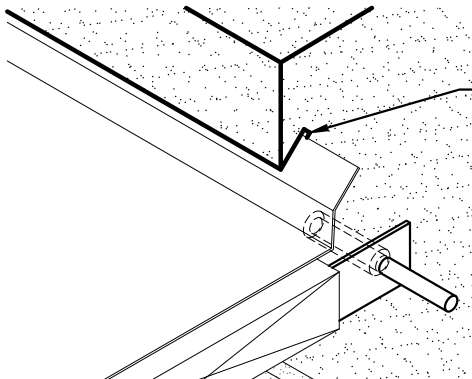
SEAL AROUND PENETRATIONS IN FLASHING
WITH COMPATIBLE SEALANT
(BY OTHERS)

WATERPROOFING MEMBRANE
(BY OTHERS)

SECTION

FIELD CUT REGLET ISOMETRIC

Typical installer field cut reglet. This should be cut at a 45° angle, 1"-2" deep and $\frac{1}{4}$ "- $\frac{1}{2}$ " wide. Fill with construction adhesive and add flashing by installer.



REAR ISOMETRIC

FIELD CUT REGLET

